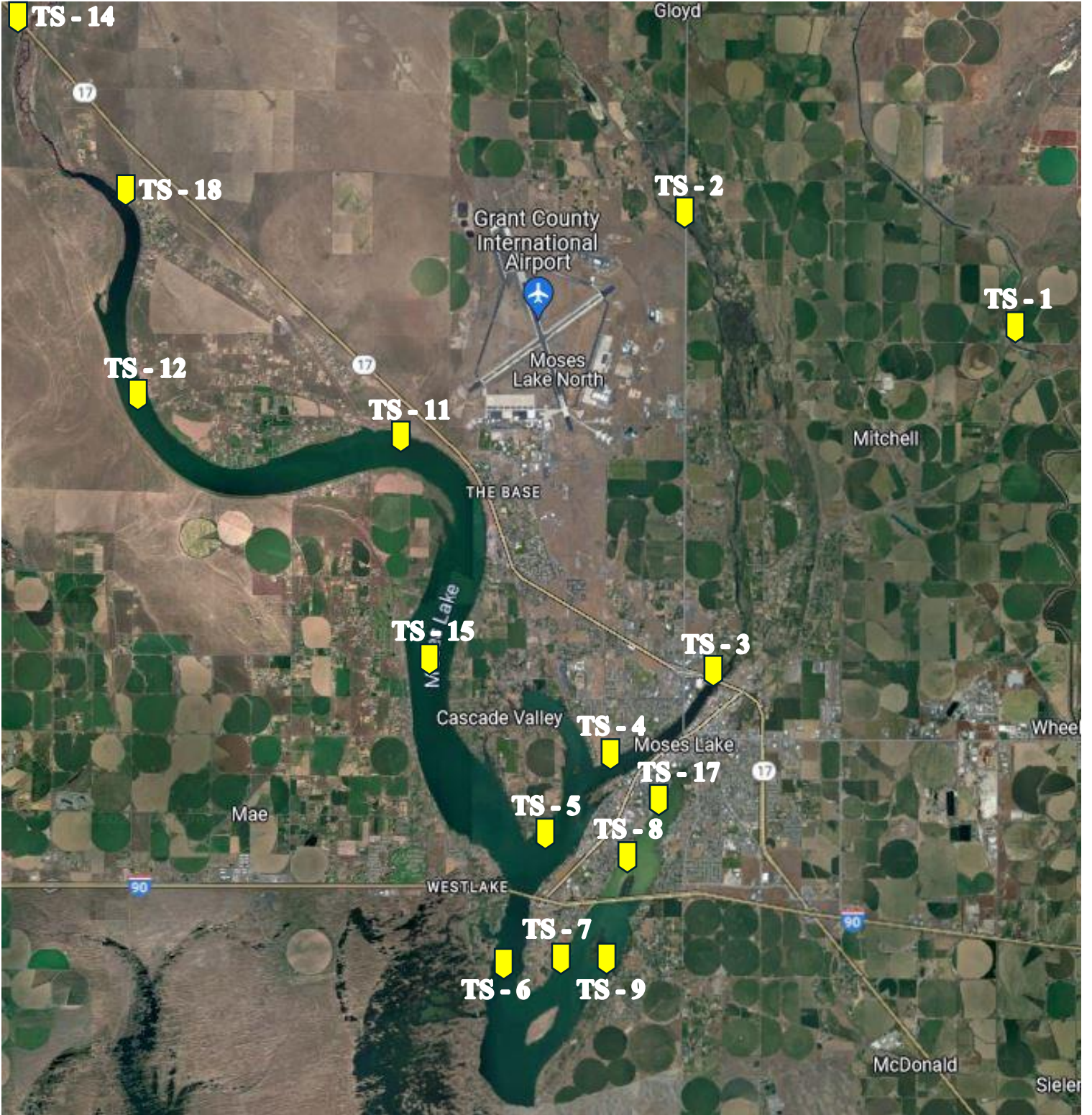


2026 Water Testing Site Map



2026 Water Testing Site Coordinates

TS-1	47.203897, -119.189187 EAST CANAL, Rd 8 & Rd N (hand sample)
TS-2	47.225533, -119.277341 CRAB CREEK, Rd 10 & Stratford (hand sample)
TS-3	47.140988, -119.269596 PARKER HORN, NEAR RR TRESTLE (hand sample)
TS-4a, d	47.125877, -119.297622 PARKER HORN, NEAR MARINA DR.
TS-5a, b, d,	47.110697, -119.315728 PARKER HORN, NEAR MAIN BODY
TS-6a, b, c, d	47.086686, -119.327466 SOUTH LAKE, NORTH OF DAMS
TS-7a, b, d	47.088065, -119.310088 PELICAN HORN, NEAR PELICAN PT.
TS-8a, d	47.106882, -119.294402 PELICAN HORN, MONTLAKE AREA
TS-9	47.087600, -119.297145 PELICAN POINT, SPRINGS (hand sample)
TS-11a, b, c, d	47.183633, -119.352997 MAIN BODY, NEAR CONNELLY PARK
TS-12a, d	47.192213, -119.425504 MAIN BODY, NORTH OF CONNELLY
TS-14	47.262237, -119.457858 HIGHWAY 17 & ROCKY FORD CREEK (hand sample) (OLD) 47.266088, -119.450164 NEPPEL RD NE & ROCKY FORD CREEK (hand sample) (NEW)
TS-15a, b, c	47.141464, -119.346471 MAIN BODY, NORTH OF WILD GOOSE
TS-16 (Eutrophix RFC 2)	47.235092, -119.444907 UPPER ROCKY FORD ARM (hand sample)
TS-17	47.113960, -119.287885 PELICAN HORN, NEAR RR TRESTLE (hand sample)
TS-18	47.229572, -119.429326 UPPER ROCKY FORD ARM (PUBLIC WDFW BOAT LAUNCH) This Site is replacing TS-16 (EutroPHIX RFC-2) (hand sample)